

Activity Sheet: 8 - Sustainable Living For A Brighter Future

1 Sketch a Sub-division

Water sensitive urban design (WSUD) is an integrated approach to incorporating water management systems into urban development.

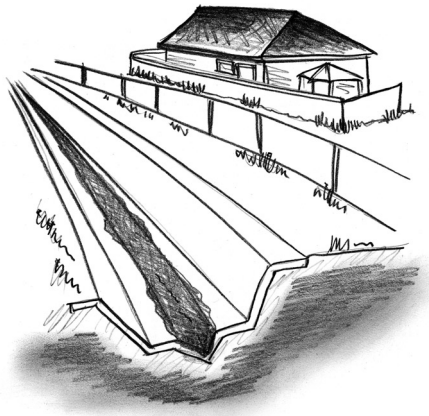
WSUD is based on the principles of water efficiency and reuse and steers away from the hard impervious surfaces like concrete drainage lines favoured by past generations.

Most importantly, water is treated as a resource rather than a waste product. The focus is on addressing pollution problems at the source rather than constructing expensive engineered add-ons downstream.

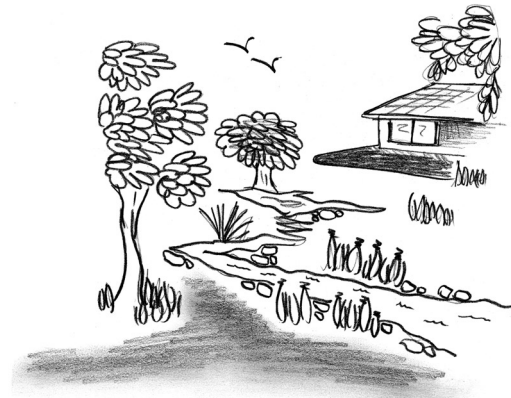
WSUD attempts to create new solutions and efficient systems that are more attractive to prospective purchasers, increase the value of adjacent land, and avoid expensive new infrastructure or augmentation costs.

The images below represent the differences between traditional development and water sensitive urban design.

- Research examples of water sensitive urban design on the internet.
- Sketch a housing sub-division which incorporates natural features as part of the development.



Standard Urban Design



Water Sensitive Urban Design

Standard Urban Design	Water Sensitive Urban Design